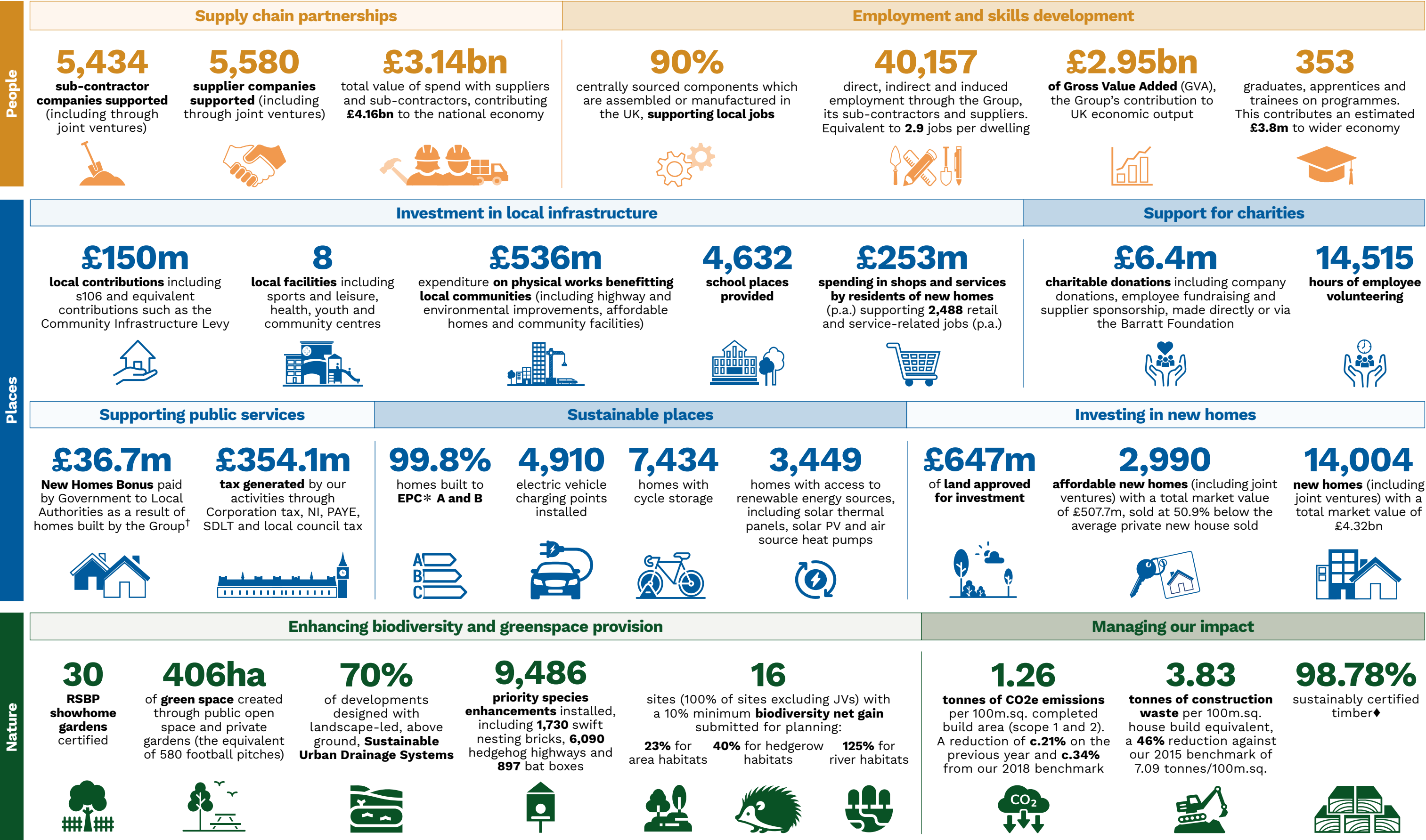


Barratt Developments PLC 2024 Socio-Economic Footprint

The infographic below provides an illustration of the social and economic contribution made by the Barratt Group to people, places and nature for the financial year 2024.

The assessment was carried out by independent experts who analysed socio-economic impacts through the delivery chain for new housing based upon Barratt Developments datasets, published research and national statistics. All figures are based in the financial year ending 30th June 2024 and include joint venture home completions in which the Group has an interest. For full details of the methodology used please see www.barrattdevelopments.co.uk/building-sustainably/our-publications-and-policies/publications.

In 2024, 100% of our developments actively contributed to community infrastructure. The Group totals are outlined below:



* EPC (Energy Performance Certificate) measures the energy efficiency of homes on a scale of A to G. ♦ PEFC (Programme for the Endorsement of Forest Certification) and FSC (Forest Stewardship Council) are the two leading sustainable forestry certifications. † New Homes Bonus paid by Government to Local Authorities as a result of the homes built by the Group has been restated, to be based on homes built in England only.